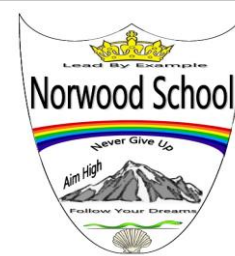


Norwood Primary School

SEND NEWSLETTER

Summer 1- 2021

SENCo — Mrs J Cockerill



People with Autism are all different and have their own needs. You cannot tell from the outside if someone is Autistic. It is shown within their behaviours- the way they act, the things they say, their discomfort and their emotions.

All people with Autism see the world differently and have difficulties with social communication (tone of voice, facial expressions), social interaction (recognising and understanding other people's emotions and managing their own emotions) and social imagination (difficulty predicting other people's intentions behaviour and imagining situations outside of their own experience).

Autism is a spectrum. This means that all people with Autism will have different degrees of these difficulties. But like everyone, people with Autism have things they're good at as well as things they struggle with. Being Autistic doesn't mean you can never make friends, have relationships or get a job. But you might need extra help with these things.

At Norwood we have several children diagnosed with Autism. We work hard to understand each child's individual needs to reduce their anxiety and get the most out of their education.

Through building awareness of Autism, we may be able to support people with Autism to feel more at ease within the world and enable them to be their best.

Jane Cockerill

Contact details:

SENAdmin@norwoodschool.co.uk

Telephone: 01733 574717




Step by Step Assessment Process

The process of assessment for a child with suspected Autism in Peterborough is through the Social and Emotional Pathway. Click link below for more information

[Emotional and Social Pathway](#)



1	An Early Help Assessment will need to be opened. This involves a discussion between the parents and Mrs Cockerill to unpick all parts of your child's life from pregnancy through to the present day.  Click link for more information Early Help in Peterborough
2	You will then be expected to complete a 12 week parenting programme. The paediatricians put this in place to support families to manage their child's behaviours, as of course, a diagnosis doesn't take away the difficulties your child may be experiencing.
3	Parents/Carers are then expected to embed the strategies from the parenting programme for 6 weeks.
4	After this, Mrs Cockerill is able to complete the referral.
5	If your child is accepted for an assessment, you will receive a letter in the post inviting you and your child to an initial appointment.
6	The process from Early Help to final diagnosis is typically 18 months to 2 years.

Peterborough Local Offer

The Local Offer gives children and young people with special educational needs or disabilities (SEND) and their families, information about support and services in Peterborough. For more information, click on the link below:
<https://fis.peterborough.gov.uk/kb5/peterborough/directory/localoffer.page?familychannel=8>

Signs of Autism

Please click on the links below

<https://www.autism-anglia.org.uk/signs-of-autism>

<https://www.nhs.uk/conditions/autism/signs/children/>

What to do if you think your child might have Autism



Does your child show signs of Autism? Consider whether your child shows the signs of Autism in different settings. Talk to friends and family.

Talk to your child's class teacher.

Can they identify signs that you see in your child?

If you are still concerned that Autism may be a possibility, make an appointment with Mrs Cockerill.

SEN consultation meetings w/c 28th June and 5th July

All parents/carers with pupils on the SEN register will receive a letter after half term to book a SEN meeting to review progress and support with transition to the next year group.

Bookable Appointments via Telephone/Zoom

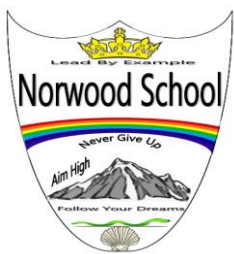


These meetings are for parent/carers to discuss any concerns about their child with Mrs Cockerill SENCo. To book please

email senadmin@norwoodschool.co.uk. Your enquiry should state, your child's name, year group and reason for request. Next scheduled meetings are on

Tuesday 22nd June 9:30 – 12:30

Tuesday 13th July 9:30 – 12:30

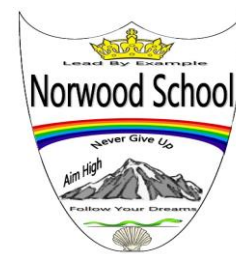


Norwood Primary School

SEND NEWSLETTER

Summer 1- 2021

SENCo — Mrs J Cockerill



Famous People with Autism



Satoshi Tajiri
The creator of Pokemon



Chris Packham CBE
Naturalist and Television presenter



Greta Thunberg
Climate Change Activist



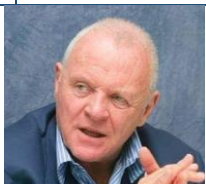
Elon Musk
CEO SpaceX
CEO Tesla



Jessica-Jane Applegate MBE
British Paralympic swimmer



Anne Hegerty
TV quiz show The Chase



Sir Anthony Hopkins
Actor

Where can I get help if my child already has a diagnosis of Autism? The Autism Specialist Teacher Service (ASTS) is a school based service and works with children who have a diagnosis of an Autistic Spectrum Diagnosis (ASD).



A parent/carers consultation service operates on the second Monday of the month. Appointments need to be pre-booked by telephoning 01733 863689

National Autistic Society offers lots of advice and support for Parents/Carers <https://www.autism.org.uk/>
A few examples - Click below
[Advice and Guidance](#)
[Anxiety](#)
[Behaviour](#)



Where can I get help if my child doesn't have a diagnosis of Autism? National Autistic Society- Peterborough Branch.
Tel: 07485304255 <http://naspeterborough.webeden.co.uk/>

Enhancing the lives of autistic people



People with Autism can struggle to make sense of the world and, at times, find this very distressing.

It may help to make others aware of how Autism affects your child with an alert card or passport.

<https://www.autism-anglia.org.uk/apply-for-your-first-card>
<https://www.autism-anglia.org.uk/autism-passport>

Norwood Website – click on links

Please check our website www.norwood-school.co.uk for copies of all letters and news updates. Click on [Children's Zone](#) and then class to see your child's curriculum. Please also see our [Special Educational Needs and Disability page](#)

Contact details:

Mrs Jane Cockerill, SEND Co-ordinator (SENCo),
Contact details for SEND at Norwood School
Email: senadmin@norwoodschool.co.uk
Tel: 01733 574717 to leave a message

Miss Stacey Chapman, SEND Governor

Correspondence must be in writing, addressed to the Clerk of the Governing Body. This can be passed on via the school office. Please ring to arrange a time to drop off any correspondence safely.

Term Dates Summer Term 2021

Half Term	Monday 31 st May to Friday 4 th June
Term Finishes	Thursday 22 nd July

Autumn Term 2021

Term Starts	Monday 6 th September
Half Term:	Monday 25 th October to Friday 29 th October
Term Finishes:	Friday 17 th December

