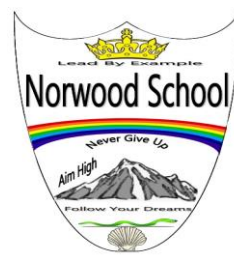


# Norwood Primary School

## SEND NEWSLETTER

Spring - 2024

SENCo — Mrs J Cockerill



With the Easter break coming up, you may be interested in activities and clubs for children with Special Educational Needs.

Vivacity have sessions throughout the Easter break covering activities such as sport, games, art, crafts, reading and writing. To find out more, please click the link [Vivacity, SEND short breaks and holiday clubs](#)

Other venues across Peterborough with SEND friendly sessions include:

Click on the links:

- Inflatation - [Inflatation - SEND friendly](#)
- Showcase Cinema - [Showcase Autism friendly](#)
- Inspired Play Town - [Inspiredplaytown](#)
- PlayTown SEND friendly sessions -

<https://fis.peterborough.gov.uk/kb5/peterborough/directory/service.page?id=XeTkXof5GMI&familychannel=0>

If your child also qualifies for Free School Meals, you can access the Holiday Activities and Food programme (HAF) for free by choosing a local HAF provider. HAF provides a free meal plus a variety of exciting activities for your child during the holidays.

Please click the link to contact your chosen HAF provider: <https://fis.peterborough.gov.uk/kb5/peterborough/directory/family.page?familychannel=2-8>

If you know of any other provision that other families might be interested in, please let me know and I will share the details with our SEND families.

*Jane Cockerill*



## Peterborough Guide

for Parent Carers of Children and Young People with Special Educational Needs and Disabilities (SEND) from birth to 25 years

Input from Family Voice and My Family, Our Needs. Please click on the link to access the guide <https://www.myfamilyourneeds.co.uk/publications/> There are a few paper copies in the school office foyer. Please pop in and pick one up.



**Family Fund**

Helping disabled children

### Support for Families with Disabled Children (SFDC)

Funded by the Department for Education and managed by Family Fund, the SFDC programme provides a wide range of grant items to families in England on a low-income, who are raising a disabled or seriously ill child or young person.

#### Who is eligible

<https://www.familyfund.org.uk/grants/am-i-eligible/>

#### What can I use my grant for?

<https://www.familyfund.org.uk/grants/what-can-i-use-the-grant-for/>

#### Apply for a grant

<https://app.familyfund.org.uk/>

**SCOPE**

= Equality for disabled people

Scope's helpline provides free, independent and impartial advice and support on issues that matter to disabled people and their families.

**Helpline - 0808 800 3333**

Monday to Friday  
9am to 6pm.

Saturday and Sunday  
10am to 6pm

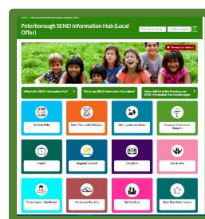
Online support including

- Benefits
- Help with bills
- Families with disabled children
- Disability equipment
- Mental Health

<https://www.scope.org.uk/advice-and-support/>

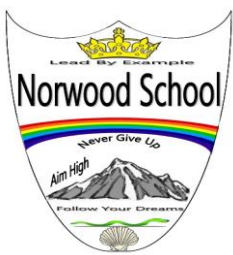
Email: [helpline@scope.org.uk](mailto:helpline@scope.org.uk).

### Information Hub



Information Hub (which used to be called the Local Offer) is a rich source of information for parent carers and children and young people with SEND. It has information on a wide range of useful topics.

[www.peterborough.gov.uk/localoffer](http://www.peterborough.gov.uk/localoffer)

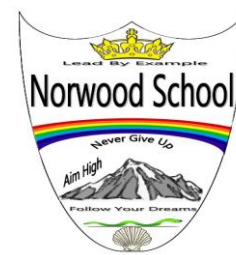


# Norwood Primary School

## SEND NEWSLETTER

Spring - 2024

SENCo — Mrs J Cockerill



Autism Central Peer Education Programme is a support programme for parents/carers and Personal Assistants of autistic children and people. Peer Educators have lived experience of autism, mostly with autistic children of their own. They undergo training to be able to support other parents/carers.

The Autism Central Peer Education Programme for East of England is accessed via the Essex County Council Hub.

**This is an all age, free service - you do not need to have a diagnosis to access.**

There are 3 elements:

**The Autism Central website.** [Click here](#) to find a broad range of information and guidance related to many topics.

**Online sessions** - drop-ins and themed sessions. The group sessions run weekly on Teams and can be booked directly from the website. [Click here](#)

**1:1** for more in-depth support. [Click here to request support](#) via a Teams or telephone call.

### Resources

Read more about autism including topics such as diagnosis, sensory differences, stress and anxiety and its impact.

<https://www.autismcentral.org.uk/guidance/understanding-autism>

Supporting health and wellbeing

<https://www.autismcentral.org.uk/guidance/supporting-health-and-wellbeing>

Education

<https://www.autismcentral.org.uk/guidance/navigation-education>

### Norwood Primary School

Norwood Primary School website has a Family Support page which highlights a variety of services that families can access for support without requiring a referral from a professional. This can be found at <https://www.norwood-school.co.uk/Family-Support> or direct by clicking the link [Family Support](#).

### Links you may find useful

#### ADHD Information

<https://adhd.foundation.org.uk/>

#### National Autistic Society

<https://www.autism.org.uk/>

**Autism** - Behaviour Support

<https://www.autism.org.uk/advice-and-guidance/topics/behaviour>

**Autism** - In-depth advice and guidance about autism and the challenges autistic people and their families face.

<https://www.autism.org.uk/advice-and-guidance>

#### British Dyslexia Association

[www.bdadyslexia.org.uk](http://www.bdadyslexia.org.uk)

#### Dyspraxia Foundation

[www.dyspraxiafoundation.org.uk](http://www.dyspraxiafoundation.org.uk)

**Keep Your Head** – Keep your head signposts you to important online information and local services on mental health and wellbeing for children and young people.

<https://www.keep-your-head.com/cyp>

**Kooth** - The Kooth team provide free, safe and anonymous online support and counselling

<https://www.kooth.com/>

**Young Mind** - Young Minds website contains a wealth of support for a range of mental health conditions <https://www.youngminds.org.uk/>

### Contact details:

Mrs Jane Cockerill. SEND Co-ordinator (SENCo),

Email: [senadmin@norwoodschool.co.uk](mailto:senadmin@norwoodschool.co.uk)

Phone: 01733 574717 to leave a message

Last day of Spring Term – Thursday 28<sup>th</sup> March



Summer Term starts on **Monday 15<sup>th</sup> April**